

SMAD3 Antibody (monoclonal) (M09)**Mouse monoclonal antibody raised against a partial recombinant SMAD3.****Catalog # AT3941a****Specification**

SMAD3 Antibody (monoclonal) (M09) - Product Information

Application	WB, IF, E
Primary Accession	P84022
Other Accession	NM_005902
Reactivity	Human
Host	mouse
Clonality	Monoclonal
Isotype	IgG2a Kappa
Calculated MW	48081

SMAD3 Antibody (monoclonal) (M09) - Additional Information**Gene ID** 4088**Other Names**

Mothers against decapentaplegic homolog 3, MAD homolog 3, Mad3, Mothers against DPP homolog 3, hMAD-3, JV15-2, SMAD family member 3, SMAD 3, Smad3, hSMAD3, SMAD3, MADH3

Target/Specificity

SMAD3 (NP_005893, 1 a.a. ~ 110 a.a) partial recombinant protein with GST tag. MW of the GST tag alone is 26 KDa.

Dilution

WB~~1:500~1000

IF~~1:50~200

E~~N/A

Format

Clear, colorless solution in phosphate buffered saline, pH 7.2 .

Storage

Store at -20°C or lower. Aliquot to avoid repeated freezing and thawing.

Precautions

SMAD3 Antibody (monoclonal) (M09) is for research use only and not for use in diagnostic or therapeutic procedures.

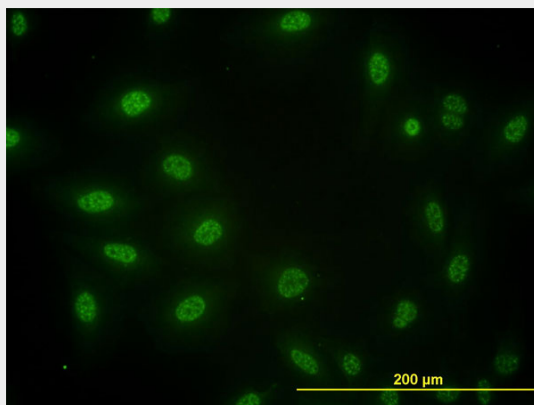
SMAD3 Antibody (monoclonal) (M09) - Protocols

Provided below are standard protocols that you may find useful for product applications.

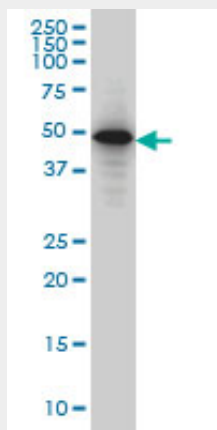
- [Western Blot](#)

- [Blocking Peptides](#)
- [Dot Blot](#)
- [Immunohistochemistry](#)
- [Immunofluorescence](#)
- [Immunoprecipitation](#)
- [Flow Cytometry](#)
- [Cell Culture](#)

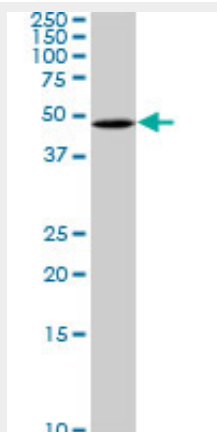
SMAD3 Antibody (monoclonal) (M09) - Images



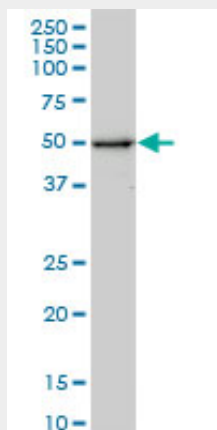
Immunofluorescence of monoclonal antibody to SMAD3 on HeLa cell. [antibody concentration 10 ug/ml]



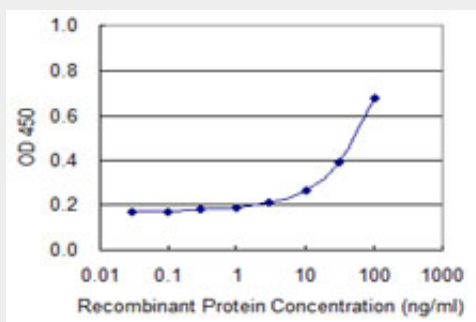
SMAD3 monoclonal antibody (M09), clone 1C11 Western Blot analysis of SMAD3 expression in HeLa S3 NE (Cat # L013V3).



SMAD3 monoclonal antibody (M09), clone 1C11. Western Blot analysis of SMAD3 expression in SJCRH30 (Cat # AT3941a)



SMAD3 monoclonal antibody (M09), clone 1C11. Western Blot analysis of SMAD3 expression in Jurkat (Cat # AT3941a)



Detection limit for recombinant GST tagged SMAD3 is approximately 3ng/ml as a capture antibody.

SMAD3 Antibody (monoclonal) (M09) - Background

The protein encoded by this gene belongs to the SMAD, a family of proteins similar to the gene products of the Drosophila gene 'mothers against decapentaplegic' (Mad) and the C. elegans gene Sma. SMAD proteins are signal transducers and transcriptional modulators that mediate multiple signaling pathways. This protein functions as a transcriptional modulator activated by transforming growth factor-beta and is thought to play a role in the regulation of carcinogenesis.

SMAD3 Antibody (monoclonal) (M09) - References

Common genetic polymorphisms in Moyamoya and atherosclerotic disease in Europeans. Roder C, et al. Childs Nerv Syst, 2010 Aug 6. PMID 20694560. Maternal genes and facial clefts in offspring: a comprehensive search for genetic associations in two population-based cleft studies from Scandinavia. Jugessur A, et al. PLoS One, 2010 Jul 9. PMID 20634891. Genetic variation in the SMAD3 gene is associated with hip and knee osteoarthritis. Valdes AM, et al. Arthritis Rheum, 2010 Aug. PMID 20506137. Single-nucleotide polymorphisms in SMAD3 are associated with chronic obstructive pulmonary disease. Yang T, et al. Exp Biol Med (Maywood), 2010 May. PMID 20463300. Personalized smoking cessation: interactions between nicotine dose, dependence and quit-success genotype score. Rose JE, et al. Mol Med, 2010 Jul-Aug. PMID 20379614.